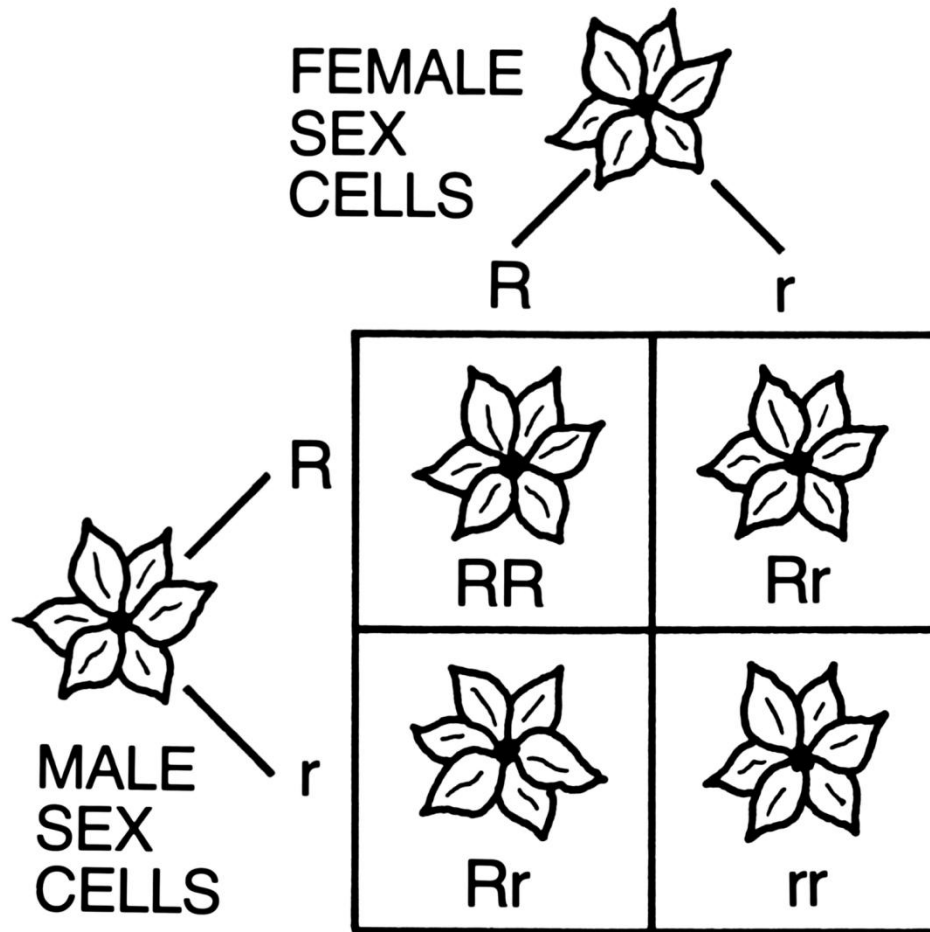
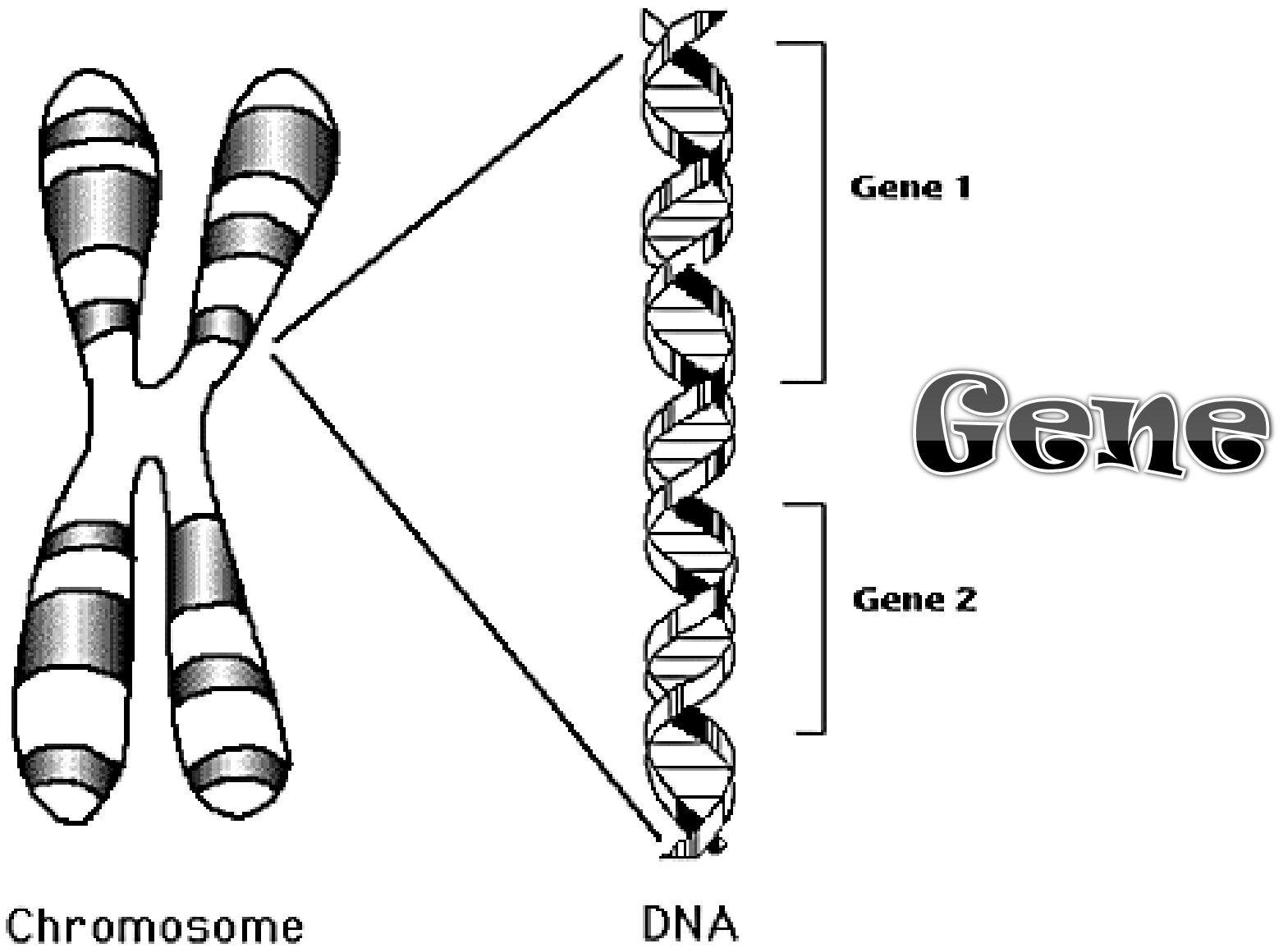


Punnett Square





Chromosome

DNA

Gene 1

Gene

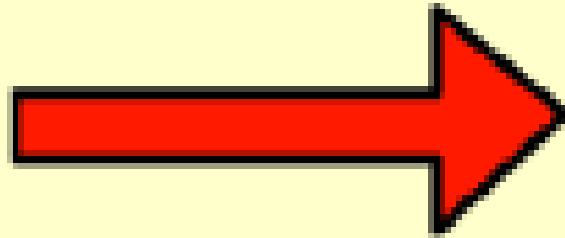
Gene 2

Genes

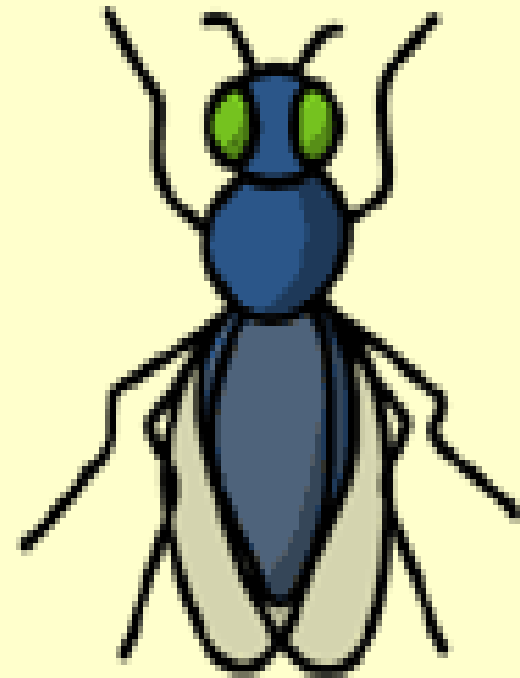
genotype



codes for



phenotype





Hereditiy

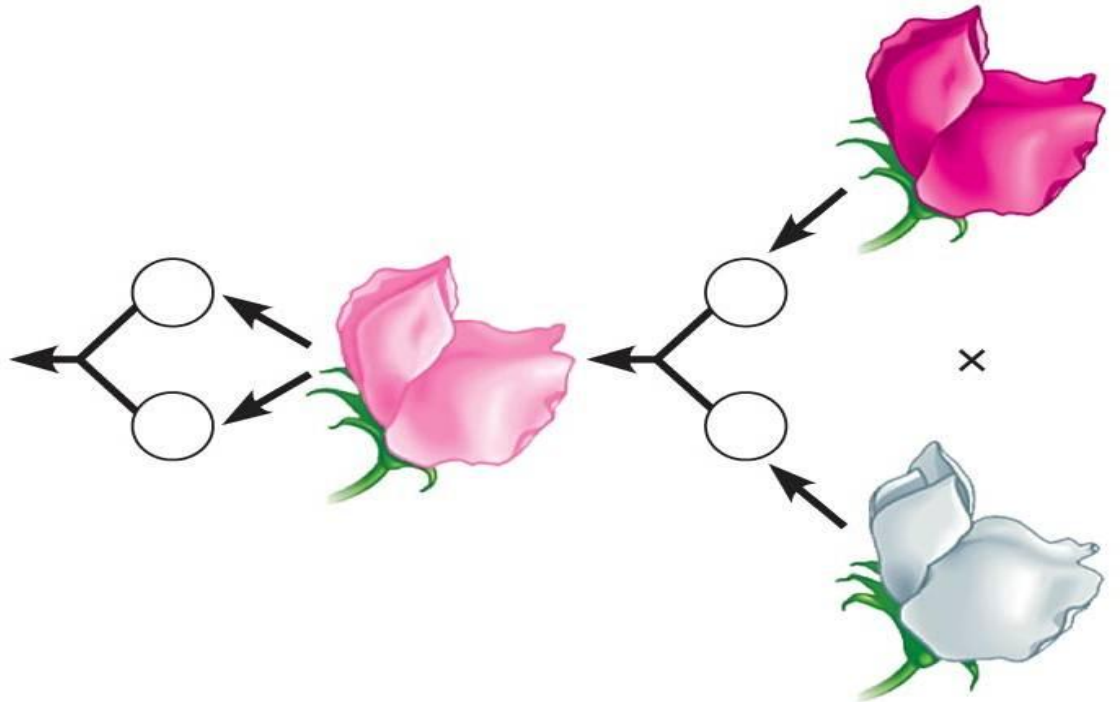
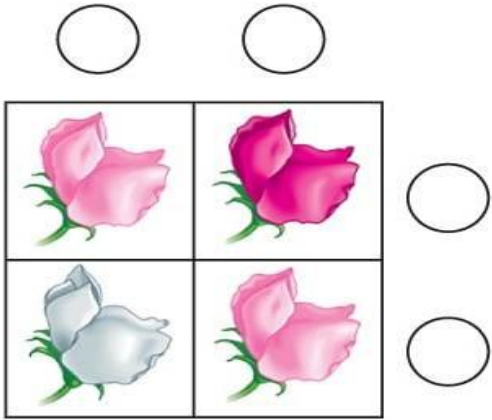


Heterozygous



Homozygous

Incomplete dominance





Co-Dominant



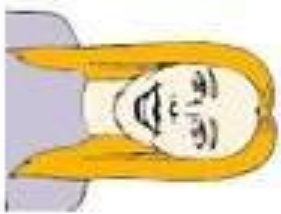
1. Dark Hair
ll, Ll



light hair
ll



2. Curly hair
Tt, Tt



straight hair
tt



3. Curly's tongue
Cc, Cc



can't curl tongue
cc



4. Mid-digital
hair present
Mm, Mm



mid-digital
hair absent
mm



5. Eyes not blue
Ee, Ee



blue eyes
ee



6. Widow's peak
Ww, Ww



no peak
ww

Dominant Traits



7. bent little finger
Bb, Bb



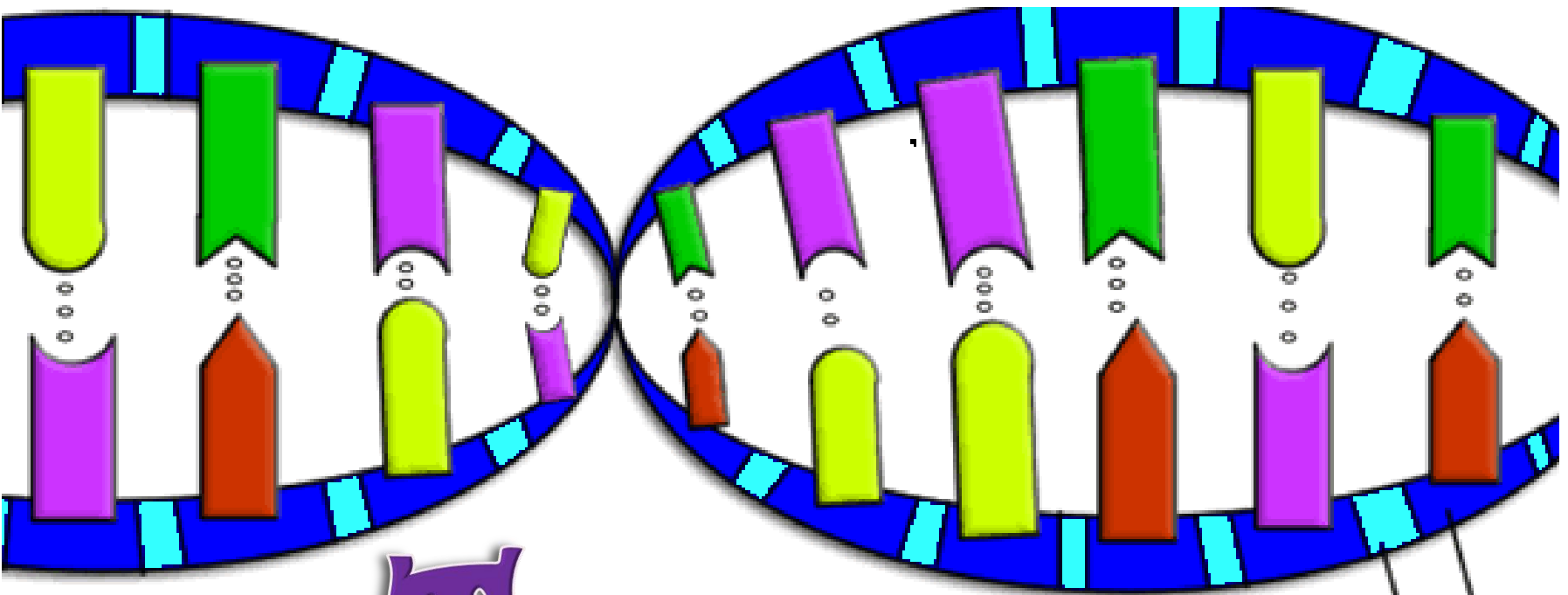
straight little finger
bb

Double Helix



DNA





Thymine



Adenine



Guanine



Cytosine

D = Deoxyribose
(sugar)

P = Phosphate

H = Hydrogen
Bond

DNA

Bases

DNA

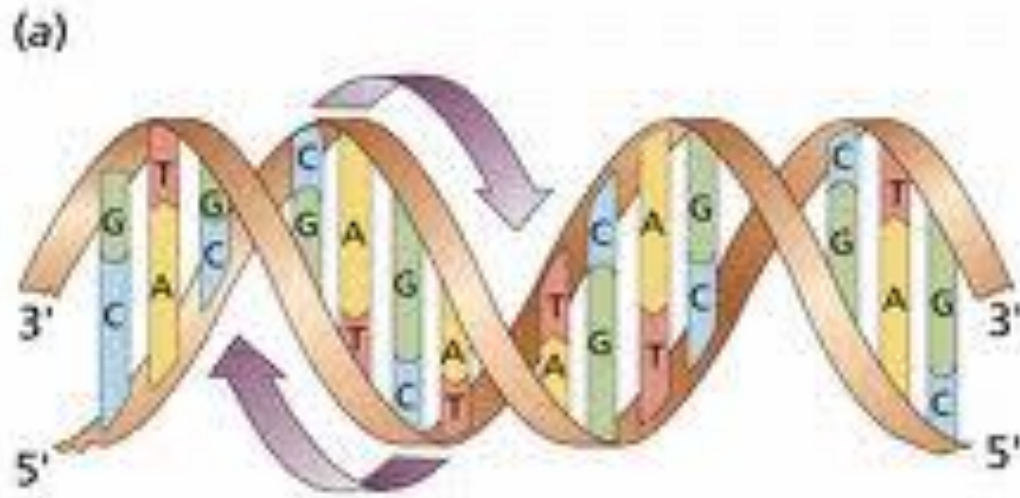
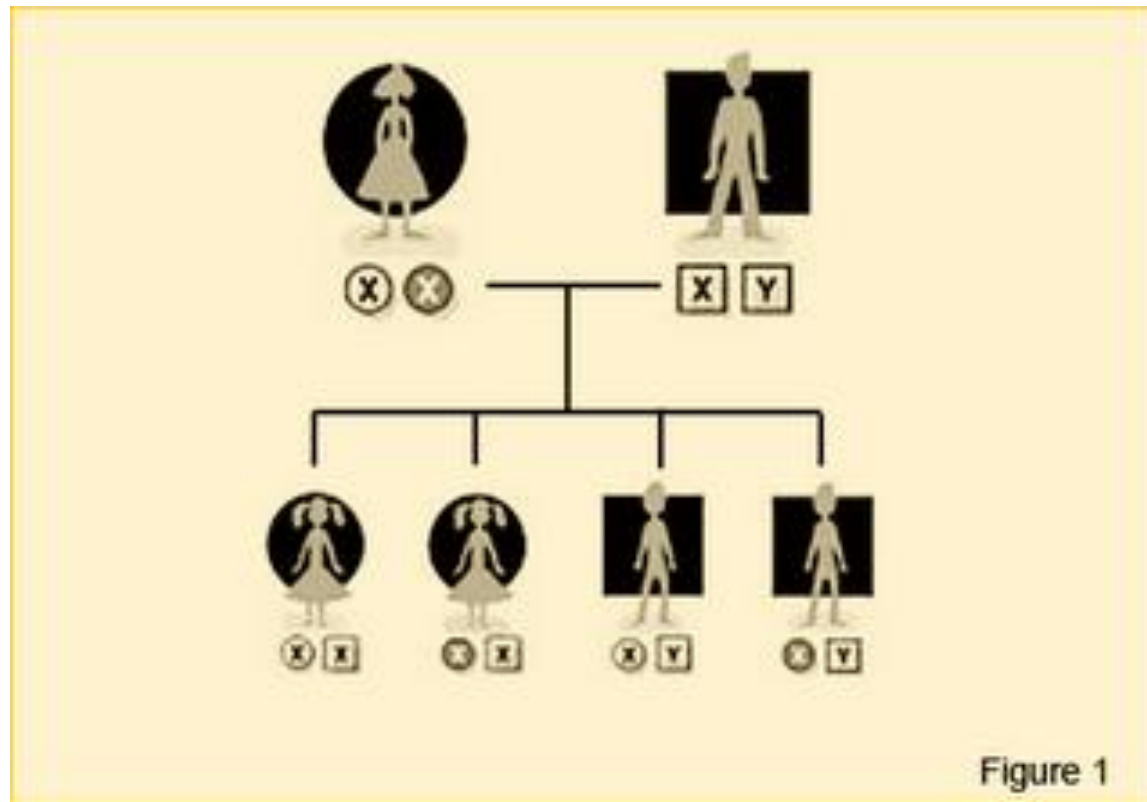


Figure 11.3 (1)

Heredity

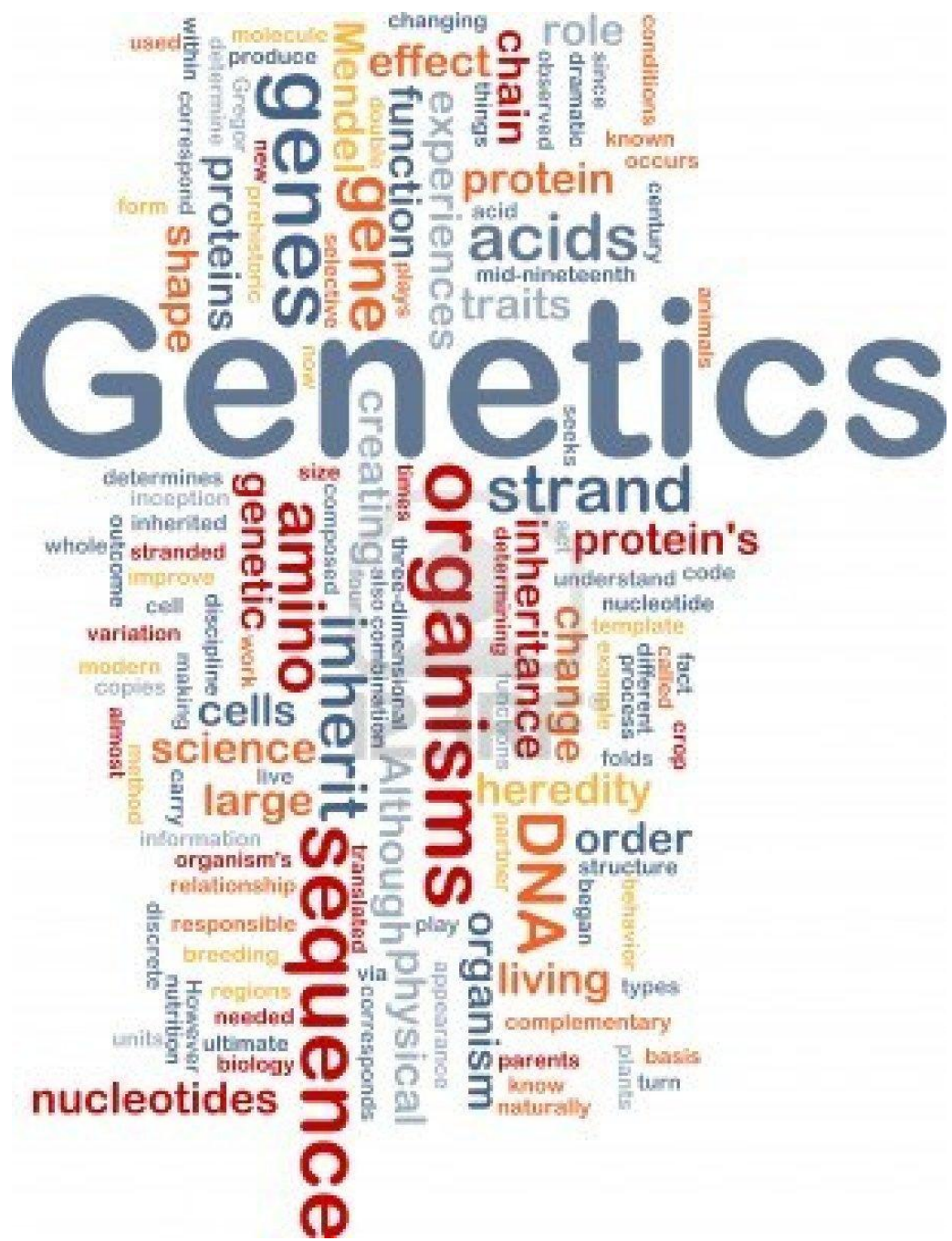


Dominant Trait



Recessive Trait





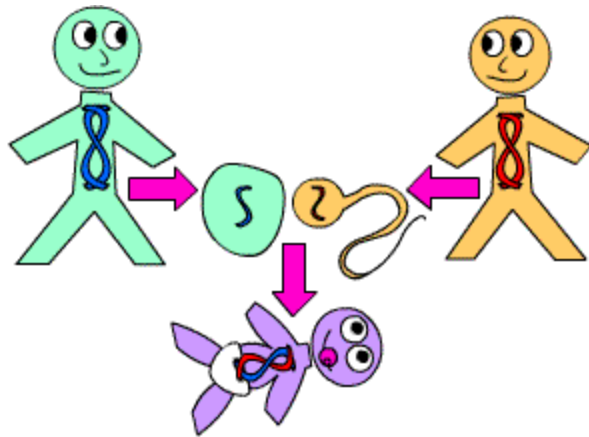
Genotype

Bb

Phenotype



Sexual Reproduction



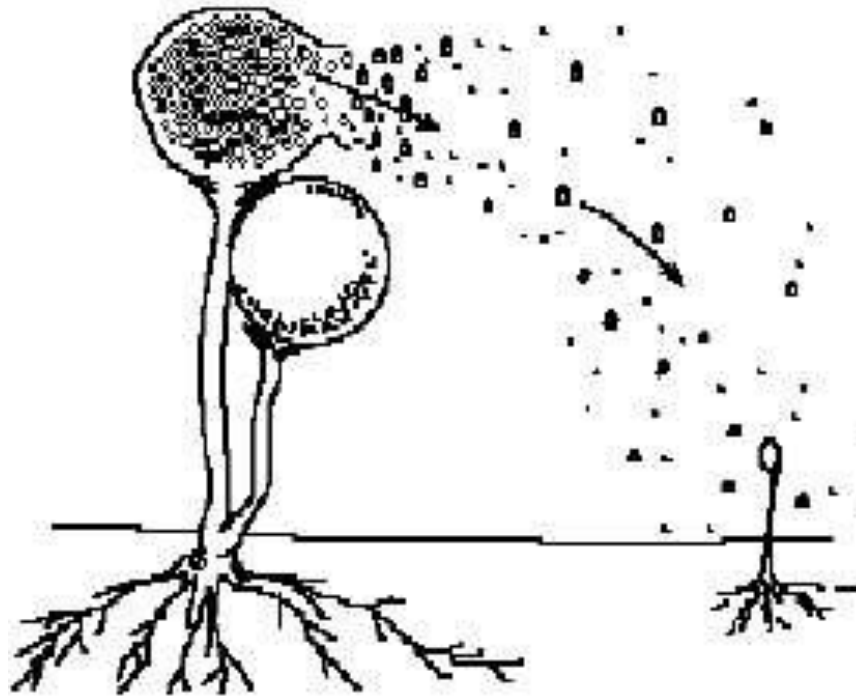
Pollination

One part of the flower called the "ANTHER" makes pollen.

Another part of the flower, called the "PISTIL" leads to the eggs.



Asexual Reproduction



Gene

